

"Raise Your Glass With Excellence"

# CAPABILITY

# GUIDELINES



**GLASSFAB**  
TEMPERING SERVICES, INC.

# OUR PRODUCT MIX

## ALL GLASS ENTRANCES

All-Glass Doors and Entrances adds an elegant appearance to a building



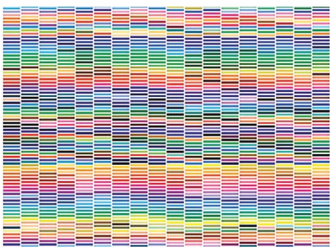
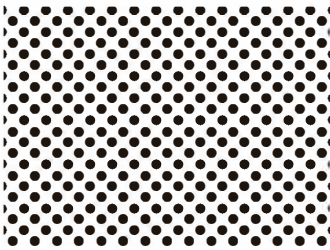
## CERAMIC FRIT

An enamel applied to glass for decorative or aesthetic appearances or for increased functionality such as solar control. Ceramic frit is applied with an online roller coater.



## DIGITAL PRINT GLASS

Dip-Tech glass technology is a complete solution of high-precision digital glass printers, long lasting and vibrant ceramic inks, capable of printing dots & lines, multi-color patterns and photo-realistic images.



## FRAMELESS SHOWER ENCLOSURES

Frameless glass shower enclosures increase value and adds a touch of luxury to your bathroom. Most frameless glass shower enclosures and doors are made using heavy glass with minimal hardware and can be configured for nearly any space. Our frameless shower enclosures are made to order, giving you the opportunity to fully customize your shower to make the bathroom of your dreams. We can help you choose the style and configuration, to meet your needs.



## HEAT SOAK

A process of heating glass to a specific temperature for a specified amount of time within a special oven in an attempt to find any impurities in the glass known as: nickel sulfide inclusions.



## CUSTOM FABRICATION

No matter how unique the need, Glassfab's precise drilling, notching, cutting, and CNC shaping offers a full range of capabilities to hang, hold, shape, and hinge for any custom application. Thanks to our waterjet and CNC capabilities, we can precisely reproduce any custom pattern in glass, including unusual shapes, notches or cutouts.



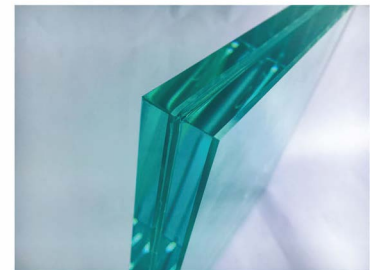
## INSULATING GLASS

Two or more glass lites sep-arated by an air spacer and hermetically sealed. Inherently insulating glass increases a window's thermal performance.



## LAMINATED GLASS

Two or more pieces of glass bonded together by a piece of polyvinyl butyral (or PVB / Vinyl.) A minimum interlayer thickness of .030 (.76mm) meets the requirements of ANSI Z97.1 or CPSC 16 CFR 1201 safety glazing standards.



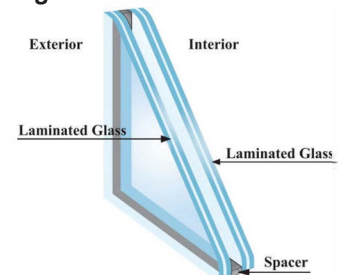
## INSULATING LAMINATED GLASS

An insulating glass unit in which the outboard component is a monolithic glass lite and the inboard lite is laminated glass.



## DOUBLE LAMINATED INSULATING GLASS

An insulated unit in which both the inboard and outboard lites are laminated glass.



# Fabrication Capabilities

PROCESS DESCRIPTION	SIZE	STANDARD	METRIC
INSULATING GLASS	Minimum	5" x 10"	127mm x 254mm
	Maximum	110" x 190"	2794mm x 4826mm
TEMPERED GLASS	Minimum	5" x 10"	127mm x 254mm
	Maximum	130" x 315"	3302mm x 8001mm
LAMINATED GLASS	Minimum (>3mm)	5" x 10"	127mm x 254mm
	Maximum (>3mm)	130" x 315"	3302mm x 2001mm
CERAMIC SPANDREL	Minimum	6" x 12"	152.4mm x 304.8mm
	Maximum	84" x 152"	2133.6mm x 3860.8mm
DIGITAL PRINTING	Minimum	5" x 10"	127mm x 254mm
	Maximum	110 x 240	2794mm x 6096mm
HEAT SOAKED GLASS	Minimum (>4mm)	5" x 10"	127mm x 254mm
	Maximum	110" x 240"	2794mm x 6096mm
<b>CUSTOM FABRICATION</b>			
FLAT POLISH	Minimum Size Strip	3" x 8"	76.2mm x 203.2mm
	Maximum Longest Edge	240"	6096mm
	Maximum Thickness	1 3/4"	44.45mm
MITRE POLISH	Minimum Size Strip	6" x 8"	152.4mm x 203.2mm
	Maximum Longest Edge	240"	6096mm
PENCIL POLISH	Minimum	4" x 4"	101.6mm x 101.6mm
	Maximum	72" x 96"	1828.8mm x 2438.4mm
BEVELING	Minimum	10" x 10"	254mm x 254mm
	Maximum	72" x 120"	1828.8mm x 3048mm
WATER JET CUTTING	Maximum	72" x 120"	1828.8mm x 3048mm
<b>MISC.</b>			
CHIPPED EDGE, DOUBLE CHIPPED			Available
WAVE, RADICAL, SHAPE POLISHING			Available
ARGON GAS FILLING			Available
DIAMON FUSION			Available
SANDBLASTING & PAINTING			Available



# **GLASSFAB**

**TEMPERING SERVICES, INC.**

- HIGH PERFORMANCE INSULATING GLASS
- HEAVY GLASS / ALL GLASS ENTERANCES
- OVERSIZED TEMPERED GLASS
- FRAMELESS SHOWER ENCLOSURES
- ARCHITECTURAL LAMINATED GLASS
- SOLAR CONTROL COATED GLASS
- SATIN / ACID ETCHED GLASS
- RESIDENTIAL GLASS
- FIRE RATED GLASS
- CUSTOM EDGEWORK
- OVERSIZED HEAT SOAKING
- SANDBLASTED GLASS
- DIGITAL PRINTING
- SPANDREL GLASS

Please contact our experienced sales and customer service team for sizes listed outside of our capability sheet.

## **Main Location**

1448 Mariani Court  
Tracy, CA 95376

Ph: (800) 490-3860  
Fx: (209) 229-1061

[Info@GlassfabTempering.com](mailto:Info@GlassfabTempering.com)

## **Reno Location**

1802-A Brierley Way #102  
Sparks, NV 89434

Ph: (775) 453-1636  
Fx: (775) 453-1638

[www.GlassfabUSA.com](http://www.GlassfabUSA.com)